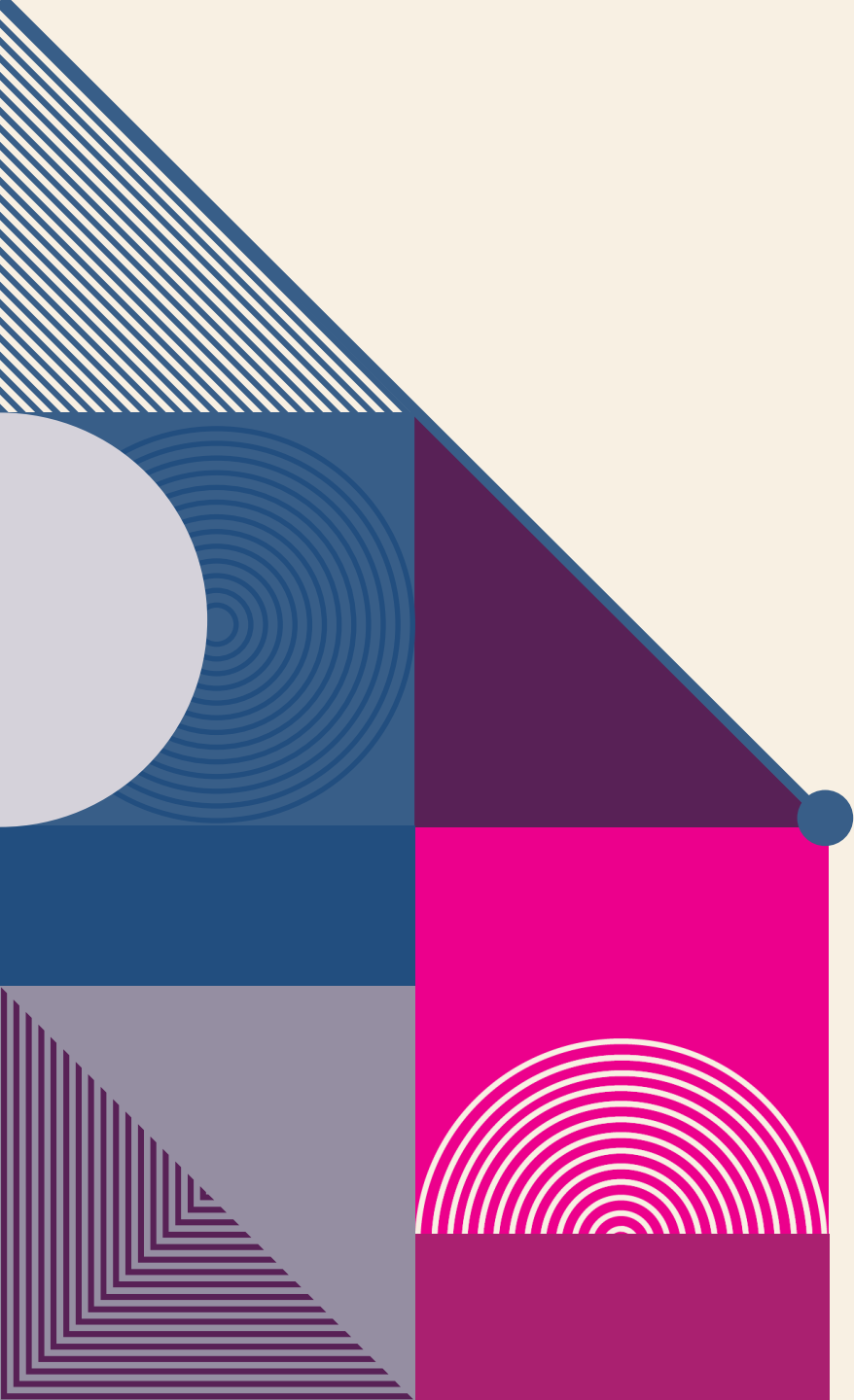




BA SEM-1 ELEMENTS OF ART

By Sunaina Gupta
(Assistant Prof. Home Science RR
Bawa DAV college for girls
Batala)



WHAT ARE THE ELEMENTS OF ART?

- Fundamental building blocks of any artwork.
- Help artists express their ideas and emotions.
- Key elements: Line, Shape, Form, Space, Texture, Light, and Color.



LINE

Lines are the basis of any design and are essential elements in interior decoration. They express feelings and ideas in art. There are four main types of lines: straight, horizontal, slanting, and circular.

- **Straight or Vertical Lines:** Reflect life, activity, dignity, strength, and firmness. Often found in objects like doors or curtains. Vertical lines create an impression of elevation in rooms with low ceilings, such as through vertically striped curtains.
- **Horizontal Lines:** Run from left to right and convey stability and calmness.
- **Slanting Lines:** Symbolize force and movement. Commonly used in staircases or dynamic decor elements.
- **Circular Lines:** Used in furniture, paintings, and sculptures. They add softness and fluidity to designs when applied thoughtfully.

FORM

Many lines from different directions create a particular form. Form refers to something solid and tangible. Without considering the harmony of form in a room, the overall arrangement may lack coherence.

Example:

A beautifully shaped, well-polished mahogany table stands out when displayed against a light background, such as blue-green or pastel shades. Its beauty diminishes when placed against dark or busy prints.

Types of Forms:

- Triangular
- Square
- Circular
- Rectangular

Form plays a crucial role in making art more attractive and adding variety to designs.





PATTERN

The word 'pattern' refers to the surface decoration of an object and is commonly used in interior decoration. Patterns add liveliness to a room, preventing it from appearing dull or monotonous.

Importance of Pattern:

- Patterns make a room more dynamic and visually appealing.
- A lack of pattern can make a room feel dull.

Optimal Use:

- Patterns should ideally cover one-fourth of the total surface area.
- Patterns can appear on curtains, sofa covers, carpets, floors, and decorative items. Even without these, patterns naturally exist in features like doors, windows, and furniture.

Considerations for Patterns:

- Doors and windows form fixed patterns within the room's structure.
- Furniture arrangement can create a balanced and cohesive pattern in the room.
- Large rooms benefit from more patterns compared to smaller rooms, enhancing their spaciousness without overwhelming the space.

TEXTURE

Texture refers to the surface quality of a material that can be touched or felt. It helps us perceive whether an object's surface is rough, soft, dry, or smooth. In interior decoration, texture applies to wall finishes, furnishings (e.g., curtains, carpets), flooring, wooden work, paintings, and even crockery.

Importance of Texture:

- Enhances the beauty of objects.
- Modern techniques, such as plastic paint and matte finishes, can replicate luxurious textures like marble.
- Texture can convey the quality of an object through its appearance and tactile feel.

Types of Texture:

- Descriptive terms include soft, sharp, hairy, woolly, furry, wavy, curly, hard, dry, and oily.

Role in Creative Art:

- Texture evokes specific feelings and emotions.
- It is a modern creative application that reveals the quality and character of objects in home decoration.



COLOR

Colour plays a significant role in our lives. When used thoughtfully, colours can evoke various moods, reduce or increase tension, create excitement, or provide a soothing effect to a tired person. They also convey emotions and feelings when blended harmoniously. However, colours can sometimes give rise to illusions or misconceptions, such as idleness, dullness, peace, or violence.

Definition of Colour:

- Colour is a quality visible in an object only when light falls on it.
- It brings immense pleasure and should be incorporated thoughtfully into home decor to create happiness and delight.

Colour in Nature and Science:

- The spectrum of colours: Red, Orange, Yellow, Green, Blue, Indigo, and Violet (ROYGBIV), as observed when sunlight passes through a prism.
- Combined, these colours form white light.

Practical Application:

- Homemakers should use colours to enhance the beauty and mood of their homes, contributing to a joyful and pleasant atmosphere.

LIGHT

Light is a vital and practical element in interior decoration with significant emotional effects. It creates excitement and removes darkness and dullness. For example, a sunny day feels cheerful and lively, while a cloudy day appears dull and somber. Without light, the principles of interior decoration cannot be fully appreciated.

Factors Affecting Light in a Room:

- 1. Season and Time of Day:** When and how the room is used affects its light requirements.
- 2. Trees and Climbers:** These control the amount of natural light entering the room.
- 3. Sunlight Orientation:** The house's orientation determines how much sunlight enters.
- 4. Number of Windows:** More windows generally allow more natural light.

Controlling Light:

- **Natural Light:** Managed through doors, windows, ventilators, and curtains.
- **Enhancing Light:** Light shades, glossy textures in furniture, glass partition walls, and reflective surfaces can increase brightness.
- **Reducing Light:** Receding colors, rough curtain textures like tapestry, and screen curtains help to decrease light.

Electric Lighting:

- At night, electric lighting is essential for decoration. It can highlight specific areas or decorative articles to enhance the ambiance and functionality of a room.

SPACE

In every form of art, the significance of pattern becomes evident only when there is sufficient empty space or plain surface behind it. Empty space plays a crucial role in interior decoration as it highlights the patterns and decorations of a room.

Importance of Empty Space:

- Provides a sense of calmness and repose.
- Enhances the visual appeal of patterns and decorations.

Application in Interior Decoration:

- Walls and floors should be kept plain to emphasize the room's decorative elements.
- Use minimal furniture and group it together in specific areas to maintain a balance of space and design.



SHAPE

Introduction to Shape

- Shape is a fundamental element of art that refers to the composition and form of an object.
- Shapes are closely related to lines, as lines help define and complete the shape.

Importance of Shape in Art and Design

- Shapes play an active role in creating beauty and decoration.
- The shape of an object not only defines its appearance but also contributes to its function.

Shape in Home Management

- The shape of an object should match its function.
- Example:
 - The shape of a room determines the type and arrangement of furniture.
 - In a small room, compact furniture is required to make the most of the space.

Shape and Harmony

- The right shape creates harmony and balance in design.
- For example:
 - Furniture for children should be designed to fit their size for better functionality and safety.



SIZE

Introduction to Size:

- Size is a key element of art that contributes to harmony and uniformity in design.
- Objects can either be the same size or vary in size, for example, a dining table vs. a side table.

Importance of Size in Art and Design

- Size plays a crucial role in the decoration of a space.
- The size of a room affects the size and form of the objects placed in it.
 - A small room should contain smaller-sized objects to maintain balance and functionality.

Size in Home Decoration

Principles of art and size contribute to interior decoration by:

- **Planning Colors:** Helps decide the appropriate colors for various elements.
- **Selecting Furniture:** Ensures the furniture size complements the room size.
- **Decorative Elements:** Enhances the attractiveness of decoratives. Revealing Family
- **Character:** The size and style of decorations can reflect the family's character.
- **Practical Choices:** Helps in deciding sizes for doors, screens, carpets, etc.

Conclusion

By applying these principles, you can make the home more beautiful, attractive, modern, and shining. Even with limited resources, understanding and using the principles and elements of art can create a well-decorated and harmonious space.



THANK YOU

By Sunaina Gupta

(Assistant Prof. Home Science RR Bawa DAV
college for girls Batala)